

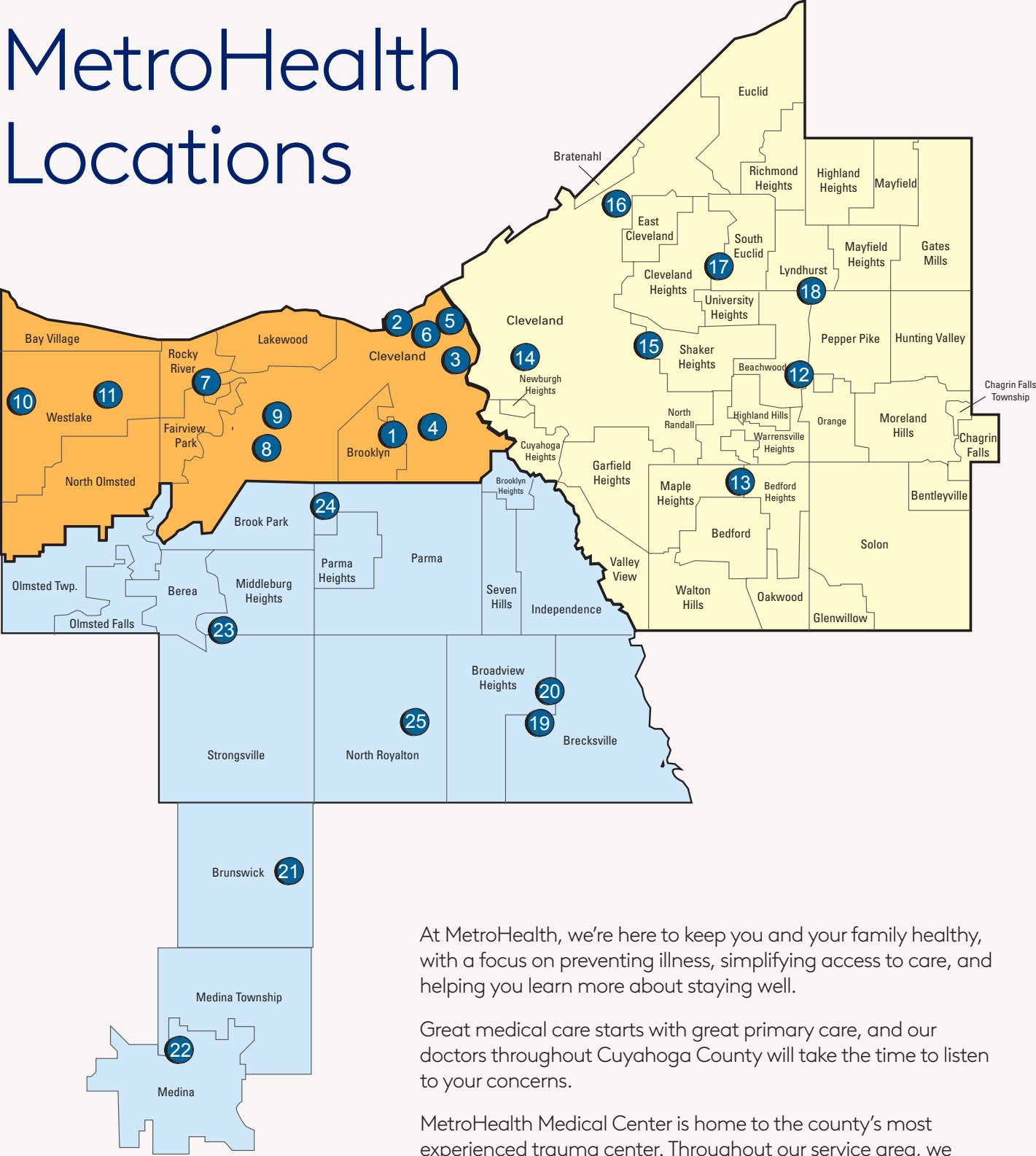


MetroHealth



YOU'RE CLOSE
TO **GREAT CARE**

MetroHealth Locations



At MetroHealth, we're here to keep you and your family healthy, with a focus on preventing illness, simplifying access to care, and helping you learn more about staying well.

Great medical care starts with great primary care, and our doctors throughout Cuyahoga County will take the time to listen to your concerns.

MetroHealth Medical Center is home to the county's most experienced trauma center. Throughout our service area, we offer four 24-hour emergency departments, several walk-in clinics and a wide range of specialties to meet your medical needs.

We are expanding so the people we serve have a full breadth of services and accessibility in their neighborhood. This expansion includes the new state-of-the-art Glick Center and a dedicated Inpatient Behavioral Health Center in Cleveland Heights.

West Region

- S P** 1. **Brooklyn Health Center**
5208 Memphis Avenue
Cleveland, OH 44144
216-398-0100
- P** 2. **LGBT Community Center of Greater Cleveland**
6705 Detroit Avenue
Cleveland, OH 44102
(216) 957-4905
- H P S S PT** 3. **MetroHealth Medical Center, Main Campus**
2500 MetroHealth Drive
Cleveland, OH 44109
216-778-7800
- H P S PT** 4. **Old Brooklyn Medical Center**
4229 Pearl Road
Cleveland, OH 44109
216-957-2000
MetroHealth Rehabilitation Institute: **216-957-3500**
- P** 5. **Ohio City Family Dentistry**
3701 Lorain Avenue
Cleveland, OH 44113
(216) 778-4725
- P S** 6. **Ohio City Health Center**
4757 Lorain Avenue
Cleveland, OH 44102
216-957-4848
- P** 7. **Rocky River Medical Offices**
20575 Center Ridge Road, Suite 500
Rocky River, OH 44116
216-957-3200
- S** 8. **West 150th Health and Surgery Center**
4330 West 150th Street
Cleveland, OH 44135
216-251-6990
- P** 9. **West Park Health Center**
3838 West 150th Street
Cleveland, OH 44111
216-957-5000
- P S** 10. **Westlake Health Center**
38 Main Street, Suite 300
Westlake, OH 44145
216-957-3200
- PT** 11. **Westlake Physical Therapy at West Shore Family YMCA**
1575 Columbia Road
Westlake, OH 44145
216-778-4414

East Region

- P S PT** 12. **Beachwood Health Center**
3609 Park East Drive,
Floors 1-5 in North Building
Beachwood, OH 44122
216-957-9959
Dermatology and Cosmetic Dermatology
3609 Park East Drive, Suite 206,
North Building Beachwood, OH 44122
216-778-DERM (3376)
- P S** 13. **Bedford Medical Offices**
19999 Rockside Road
Bedford, OH 44146
216-524-7377
- P S** 14. **Broadway Health Center**
6835 Broadway Avenue
Cleveland, OH 44105
216-957-1500
- P** 15. **Buckeye Health Center**
2816 East 116th Street
Cleveland, OH 44120
216-957-4000
- H P S** 16. **Cleveland Heights Medical Center**
10 Severance Circle
Cleveland Heights, OH 44118
216-524-7377
- S P** 17. **Glenville Community Health Center**
11100 St. Clair Avenue
Cleveland, OH 44108
(216) 957-5600
- S** 18. **Lyndhurst Health Center**
Brainard Place Medical Center
29001 Cedar Road, Suite 518
Lyndhurst, Ohio 44124
Audiology **216-778-5791**
Ear, Nose & Throat **216-778-5791**
General Surgery **216-778-4391**
Hand and Upper
Extremity Care **216-778-3880**
Neurosurgery **216-778-8822**
Occupational Therapy..... **216-778-4414**
Orthopaedics..... **216-778-4393**
Physical Medicine and
Rehabilitation..... **216-778-4414**
Plastic Surgery..... **216-778-4450**
Podiatry **216-778-2457**
Radiology **216-778-3456**
Urology..... **216-778-4257**

South Region

- P S** 19. **Brecksville Health and Surgery Center**
9200 Treeworth Boulevard
Brecksville, OH 44141
216-957-9000
- PT S** 20. **Broadview Heights Sports Medicine and Physical Therapy**
Cleveland Sports Institute
1 Eagle Valley Court, Suite 204
Broadview Heights, OH 44147
216-95-SPORT (77678)
- S P** 21. **Brunswick Health Center**
1299 Industrial Parkway North, Suite 250
Brunswick, OH 44212
216-957-1450
- P** 22. **Medina Health Center**
111 W Reagan Parkway
Medina, OH 44256
330-725-6226
- P S** 23. **Middleburg Heights November Family Health Center**
7800 Pearl Road
Middleburg Heights, OH 44130
216-957-9700
- H P S** 24. **Parma Medical Center**
12301 Snow Road
Parma, OH 44130
216-524-7377
- PT P** 25. **State Road Family Practice**
12744 State Road
North Royalton, OH 44133
440-582-1484

All primary care appointments can conveniently be scheduled online at metrohealth.org/appointments.

For more information and hours at each location, visit metrohealth.org/locations.

KEY:

-  Emergency Department
-  Hospital
-  MetroExpressCare
-  Primary Care
-  Pharmacy
-  Specialty Care
-  Radiology
-  Surgery Center
-  Lab
-  Eyewear
-  Physical Therapy
-  Dentistry

METROHEALTH EXPRESS CARE AND WALK-IN CLINICS

MetroExpressCare centers and MetroHealth walk-in clinics are convenient solutions when you or your family needs immediate attention for a minor illness or injury — even during weekends and evenings.

METROEXPRESSCARE

Do you have a broken bone? Is it strep throat? X-ray and lab services are available at each location.

MetroExpressCare locations are great for conditions that require attention sooner than a regular appointment with your doctor but are NOT life-threatening. These may include minor burns, cuts, scrapes, sprains and strains, minor allergic reactions, fever or flu.

MetroExpressCares are available at our **Beachwood, Broadway, Middleburg Heights, Ohio City** and **West Park** locations. For more information, hours at each location and to check wait times, visit metrohealth.org/expresscare.

METROHEALTH PHARMACY

With locations across Cuyahoga County, MetroHealth pharmacies offer excellent value and convenience for our patients and the entire community. We fill prescriptions from MetroHealth and non-MetroHealth providers. Mail order home delivery services are also available.

Pharmacies are available at the following MetroHealth locations:

- Beachwood
- Bedford
- Brecksville
- Broadway (Cleveland)
- Buckeye (Cleveland)
- Cleveland Heights
- Main Campus (Cleveland)
- Middleburg Heights
- Ohio City
- Old Brooklyn (Cleveland)
- Parma

216-957-MEDS (6337)

Manage and refill your existing prescriptions online at metrohealth.org/pharmacy

ABOUT METROHEALTH

Founded in 1837, MetroHealth is leading the way to a healthier you and a healthier community through service, teaching, discovery, and teamwork. Cuyahoga County's public, safety-net hospital system, MetroHealth meets people where they are, providing care through four hospitals, four emergency departments, and more than 20 health centers and 40 additional sites. Each day, our 8,000 employees focus on providing our community with equitable health care—through patient-focused research, access to care, and support services—that seeks to eradicate health disparities rooted in systematic barriers. For more information, [visit metrohealth.org](http://metrohealth.org).

connect@metrohealthcle



PEDIATRIC CARE WALK-IN CLINICS

Walk-in pediatric care is available at the following MetroHealth locations:

- Main Campus M-F, 8 a.m. - 4 p.m.,
- Middleburg Heights M-Th, 4 p.m. - 7:30 p.m

Recovery Resources

Providing integrated behavioral and primary health care in partnership with MetroHealth to address clients' comprehensive health needs. This is especially helpful and recommended for clients with a severe mental health diagnosis or clients with a significant chronic illness. Services may vary by location.

Lakewood Recovery Resources

14805 Detroit Avenue, #200
Lakewood, OH 44107

Old Brooklyn Recovery Resources

4269 Pearl Road
Cleveland, OH 44109

MyChart
metrohealth.org/mychart